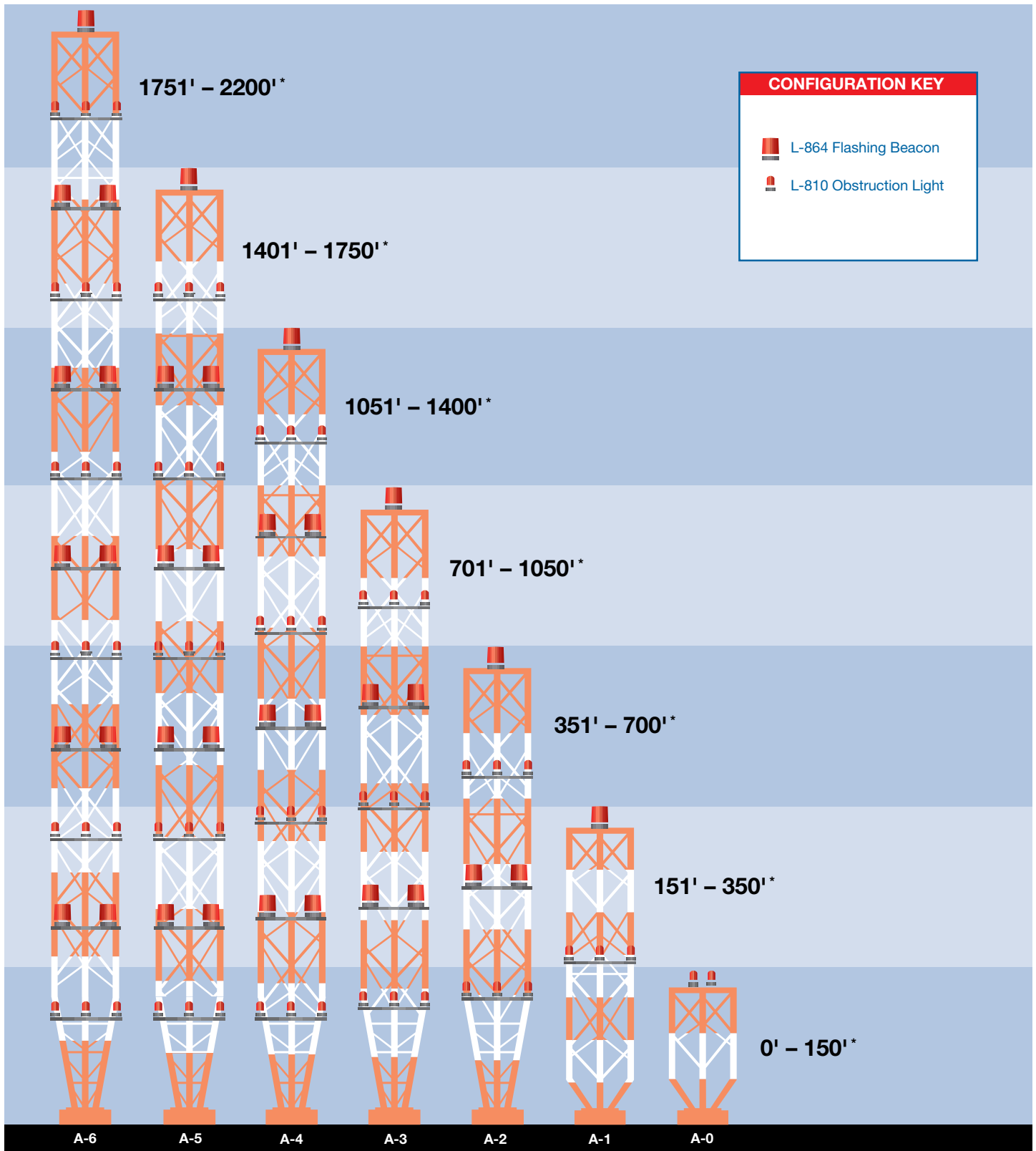


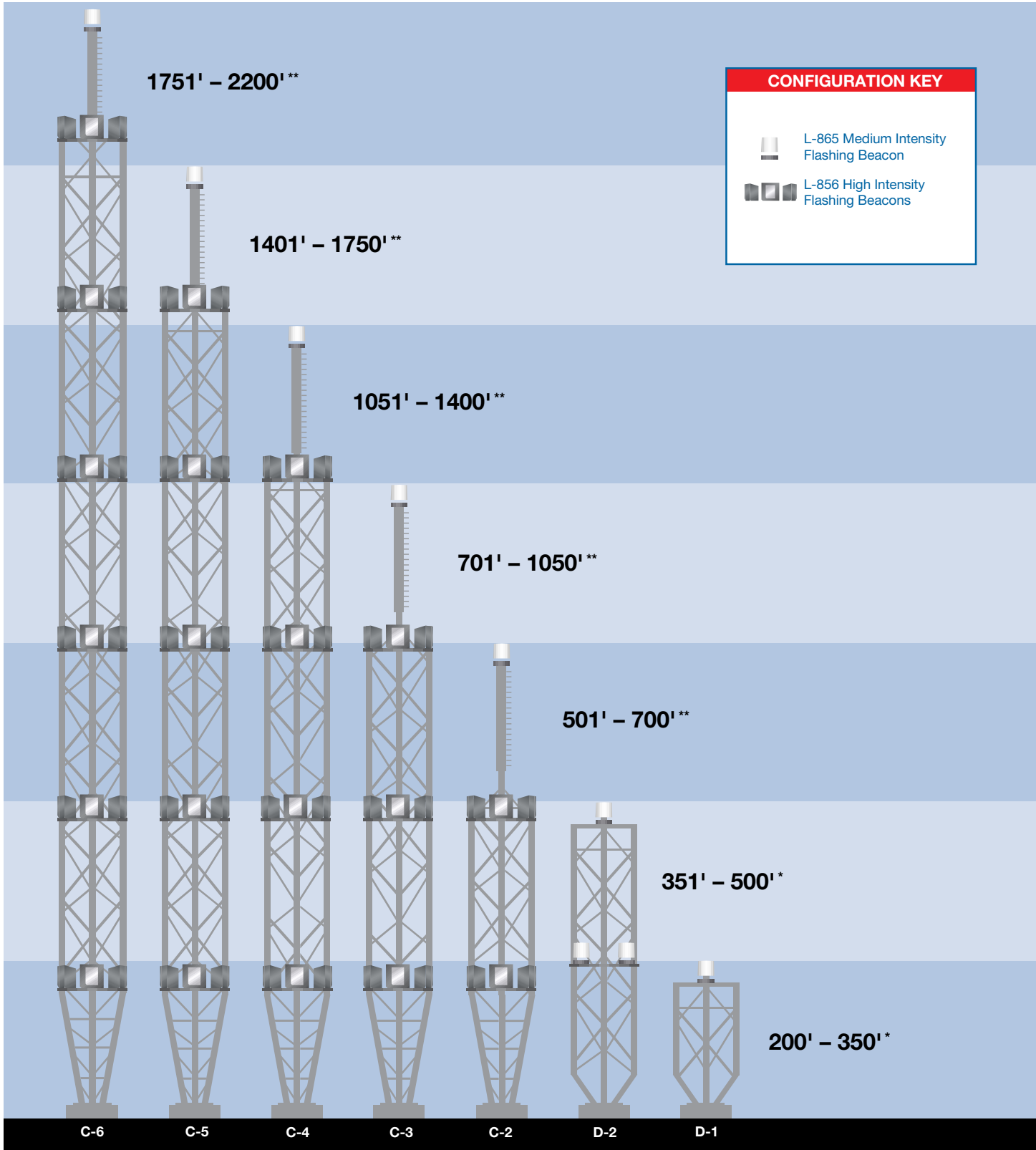
FAA Red Lighting **Type A†**—Painted Tower/Red Lights for Night



† This illustration is meant to be used as a guideline only. Please refer to FAA Advisory Circular 70/7460-1K

* Including any appurtenance

FAA White Lighting **Type C[†]** and **Type D[†]**—White Lights for Day/
White Lights for Night

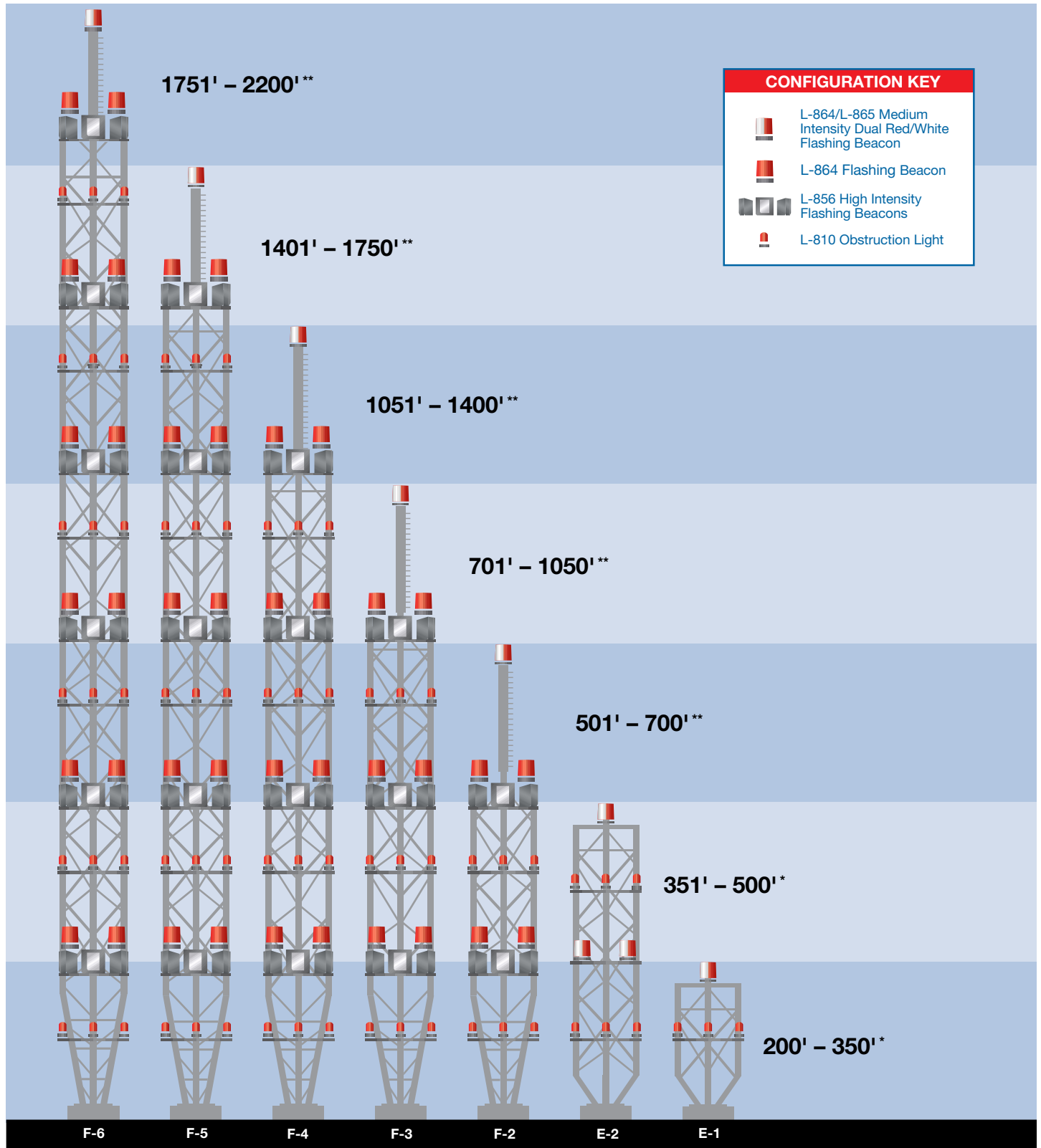


[†] This illustration is meant to be used as a guideline only. Please refer to FAA Advisory Circular 70/7460-1K

* Including any appurtenance

** Excluding appurtenance

FAA Dual Lighting Type E[†] and Type F[†]— White Lights for Day/ Red Lights for Night



[†] This illustration is meant to be used as a guideline only. Please refer to FAA Advisory Circular 70/7460-1K

* Including any appurtenance

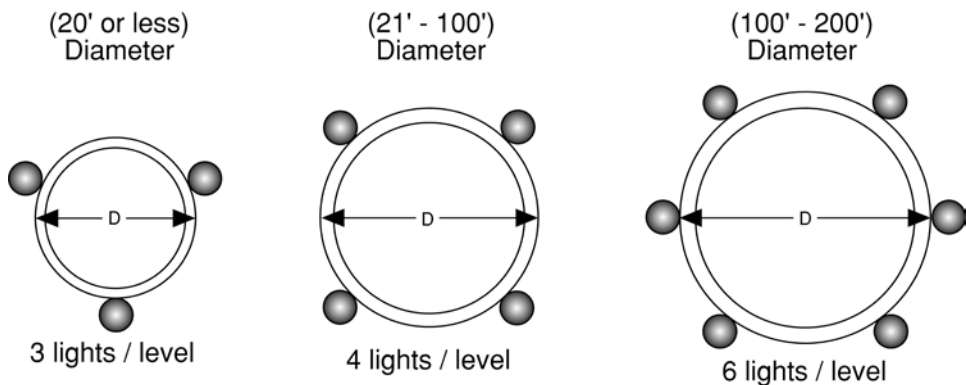
** Excluding appurtenance

FAA/FCC Chimney & Stack Lighting Requirements

NOTE:
Information is provided to assist in your product selection based on AC 70/7460-1K and AC 150/5345-43F Advisory Circular. Your application may demand special lighting requirements. LED Fixtures are ideal for solid structure applications.

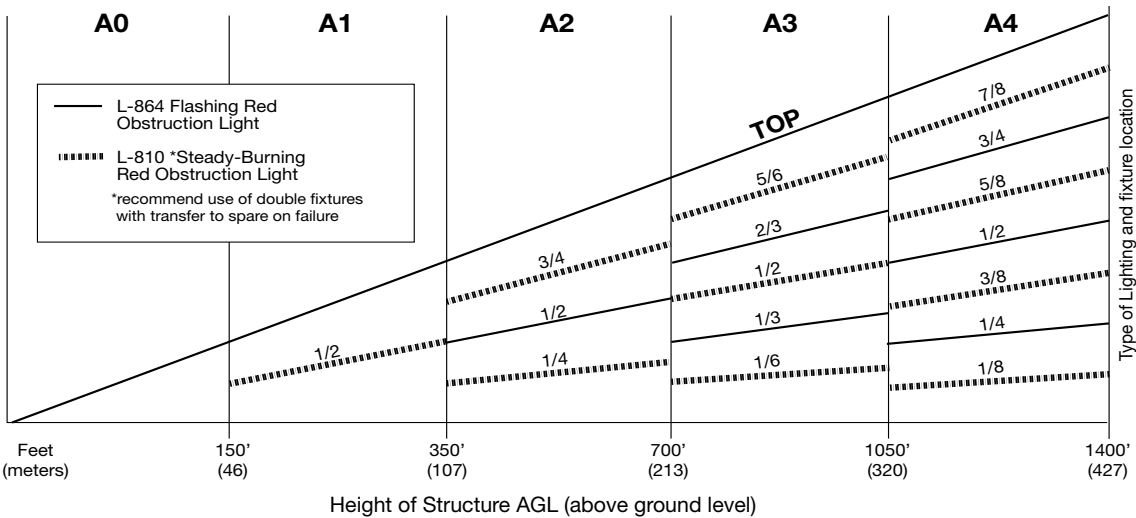


NUMBER OF LIGHTS PER LEVEL/STRUCTURE DIAMETER



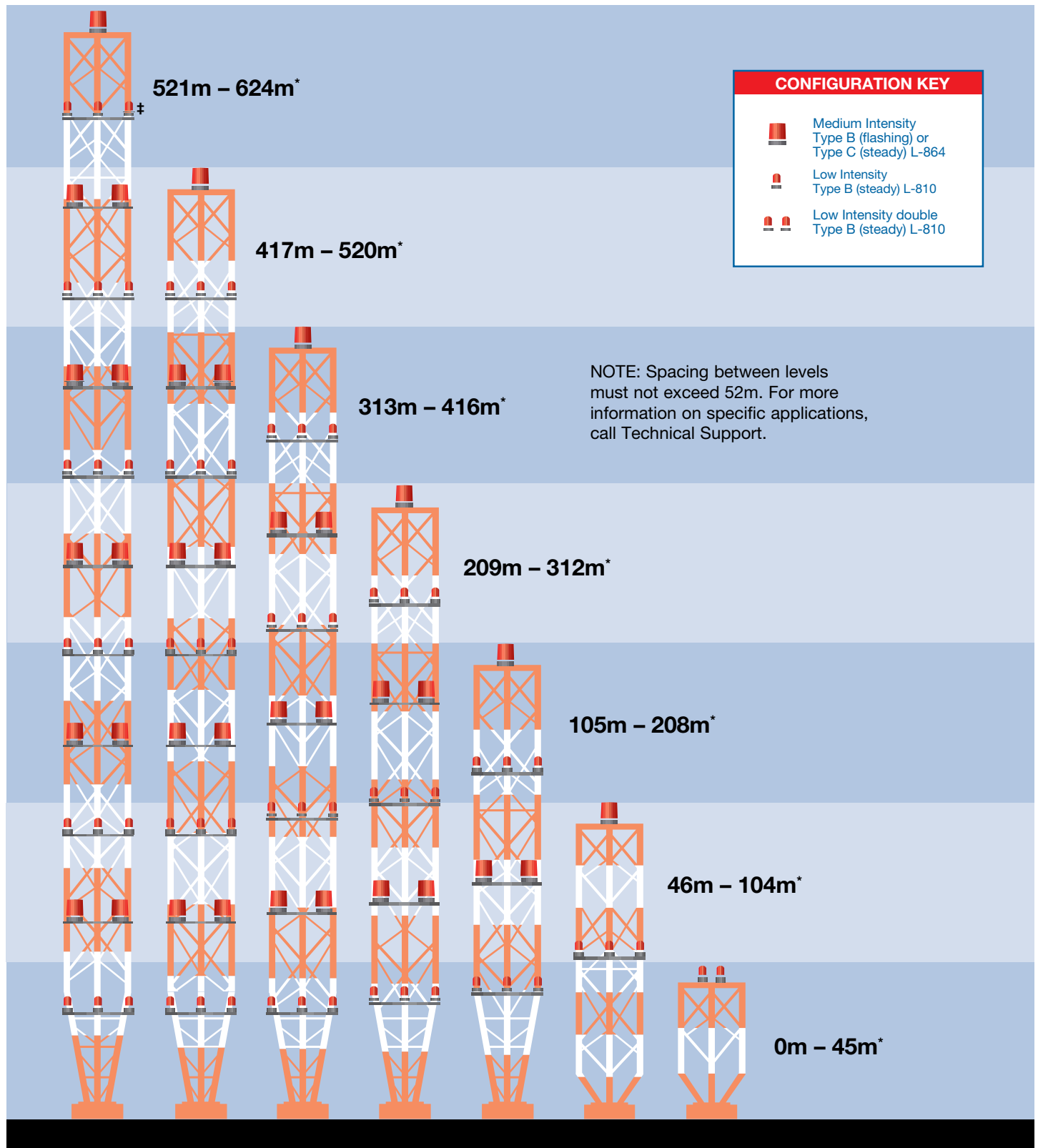
NOTE:
Number of lights per level is the minimum

NUMBER AND TYPES OF LIGHTING LEVELS/HEIGHT



NOTE:
Lowest level of lights must be raised above the height of adjacent structures. If your structure is not represented, allow us to assist you with selecting the proper products for your specific structure. *Example:* For structure “A1” requires one L-864 beacon at top and at 1/2 tower height mount L-810 sidelights.

ICAO Red Lighting[†] — Painted Tower/Red Lights for Night

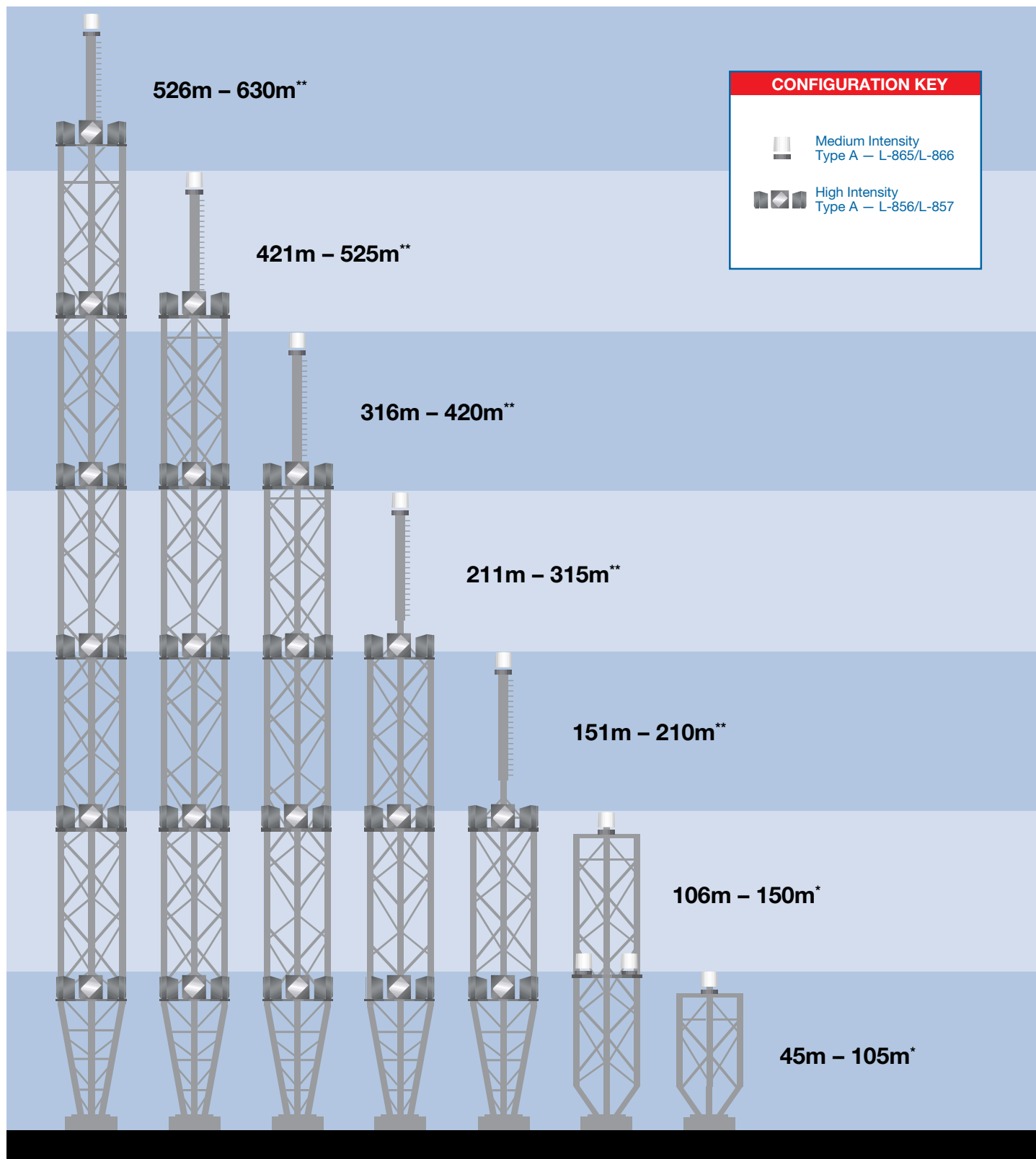


[†] This illustration is meant to be used as a guideline only. Please refer to ICAO (Annex 14)

* May use low intensity Type B or medium intensity Type B at this level

* Including any appurtenance

ICAO White Lighting[†] — White Lights for Day/White Lights for Night

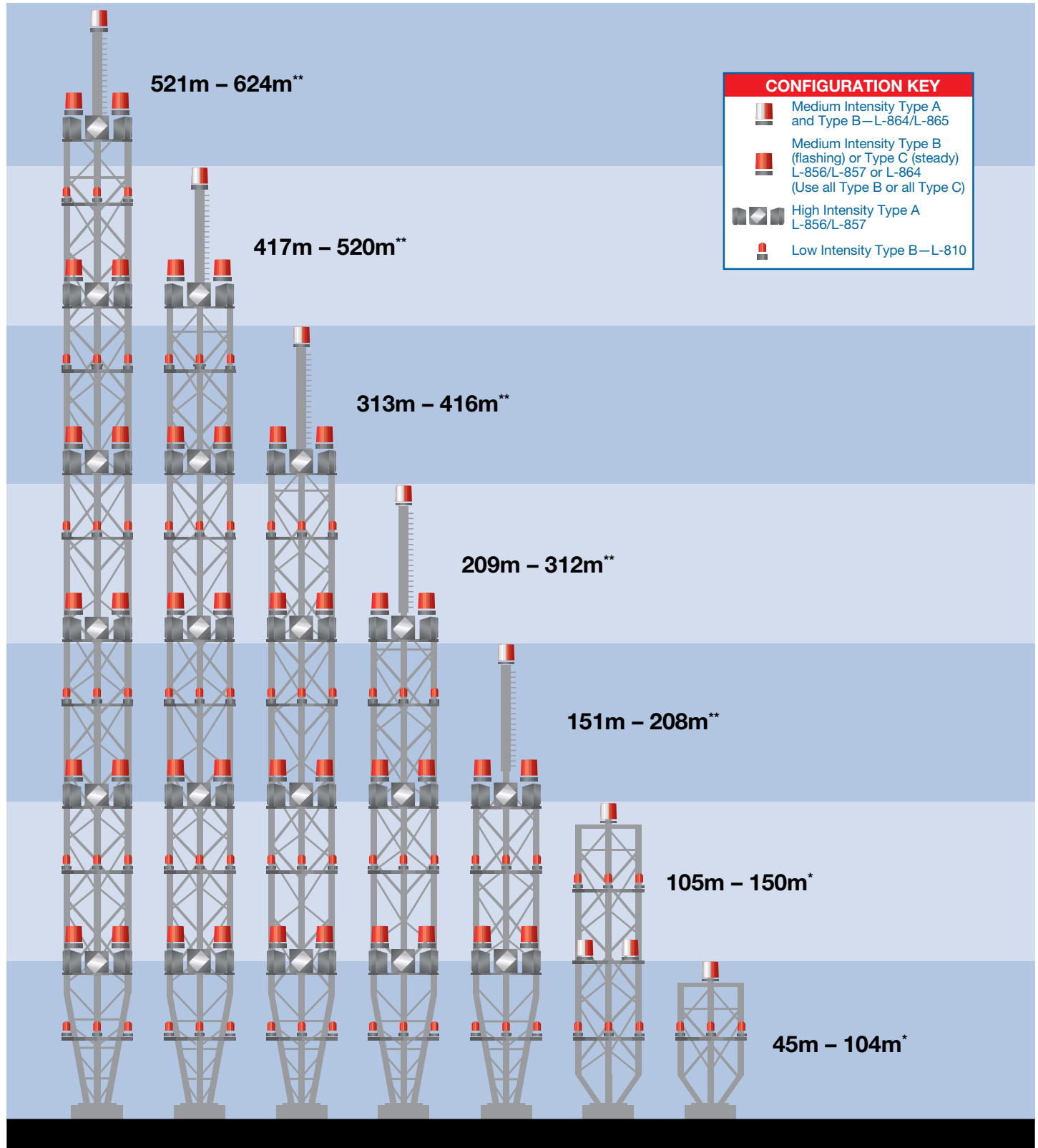


[†] This illustration is meant to be used as a guideline only. Please refer to ICAO (Annex 14)

^{*} Including any appurtenance

^{**} Excluding appurtenance

ICAO Dual Lighting[†]—White Lights for Day/Red Lights for Night



[†] This illustration is meant to be used as a guideline only. Please refer to ICAO (Annex 14)

* Including any appurtenance

** Excluding appurtenance