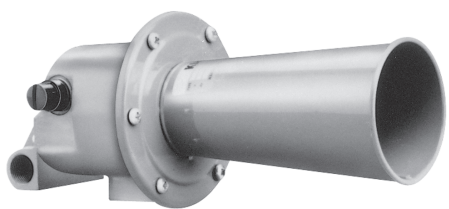


# Klaxon® Klaxet Signals

*Motor Driven*

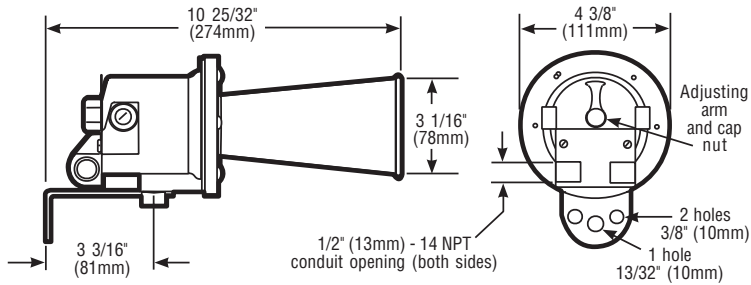
## KLAX Series



The Edwards KLAX series is an indoor, projector type signal. The KLAX sounds the unique Klaxon tone. The sound is produced by the revolution of a serrated rotor against a hardened steel stud riveted to the center of a diaphragm.

The KLAX is designed for bracket mounting using the supplied bracket. Field wiring is connected through the 1/2" (13mm) conduit connection.

Designed for use in high noise environments such as machine and heavy equipment areas. Uses include equipment start and stop, general warning, and equipment breakdown.



### FEATURES

- > Completely assembled
- > Rugged, heavy-duty design
- > Complete with mounting bracket
- > Automatic resettable overload protection

### AGENCY APPROVALS

- > UL Listed

### SPECIFICATIONS

- > 101dB at 10 ft
- > Frequency - 470 Hz
- > Rated for intermittent use - 1 minute on, 5 minutes off

Cat. No.	Volts	Current
KLAX-G5	24V AC 50/60 Hz	2.5A