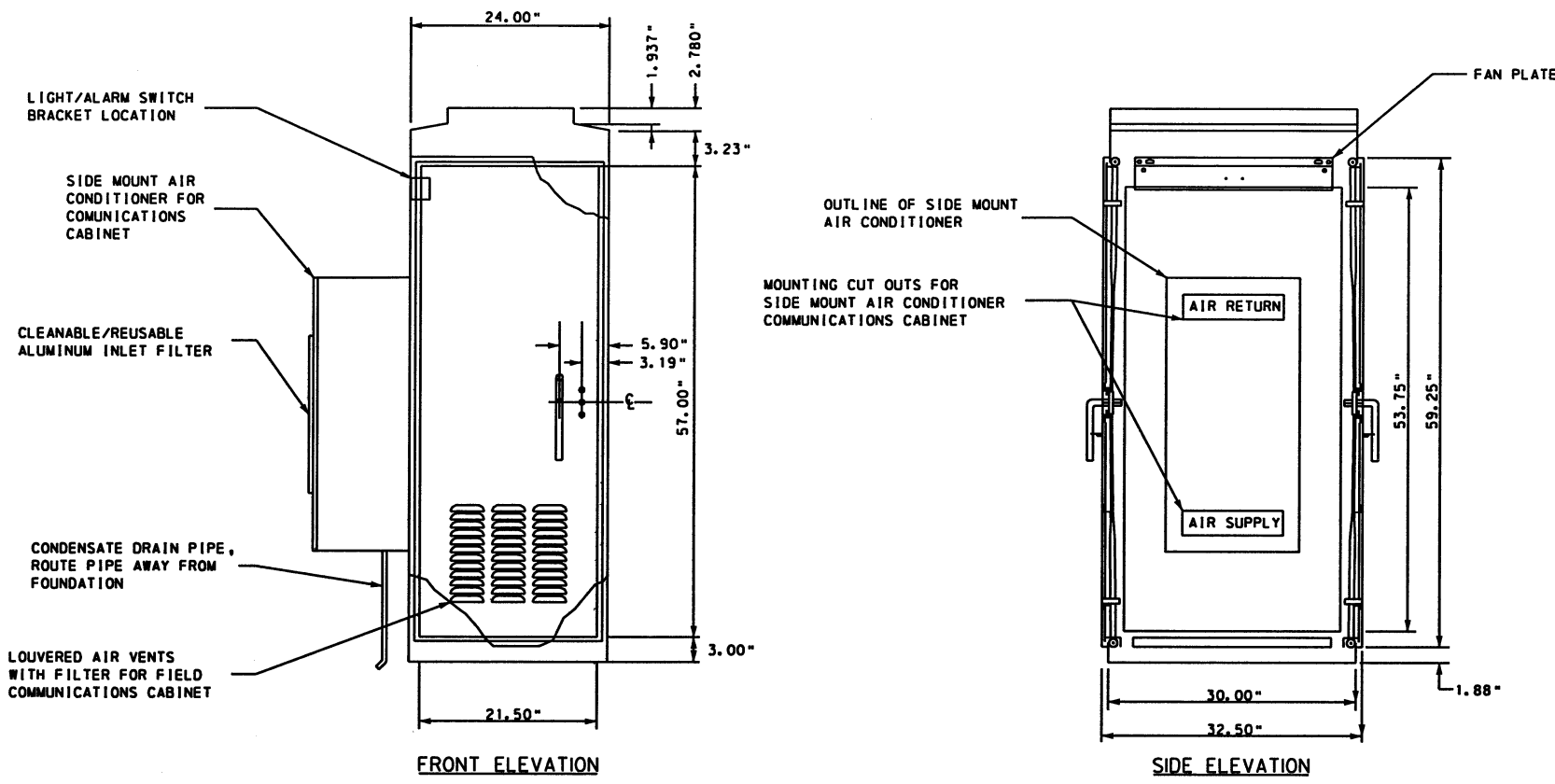
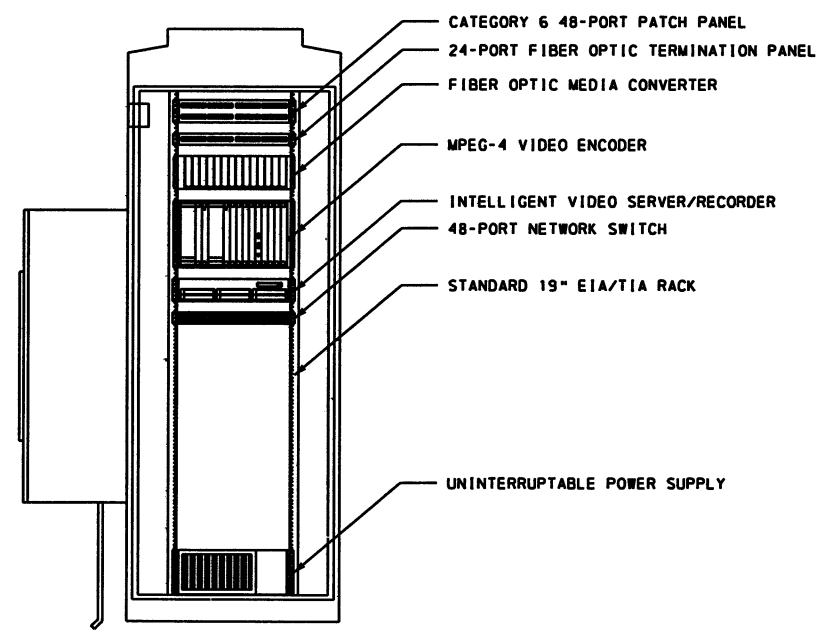


TYPICAL CAMERA POLE AND
REMOTE EQUIPMENT CABINET
MOUNT DETAIL



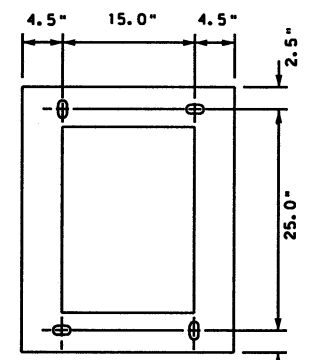
FRONT ELEVATION

SIDE ELEVATION

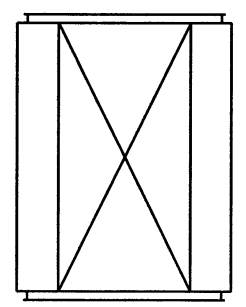


EQUIPMENT LAYOUT

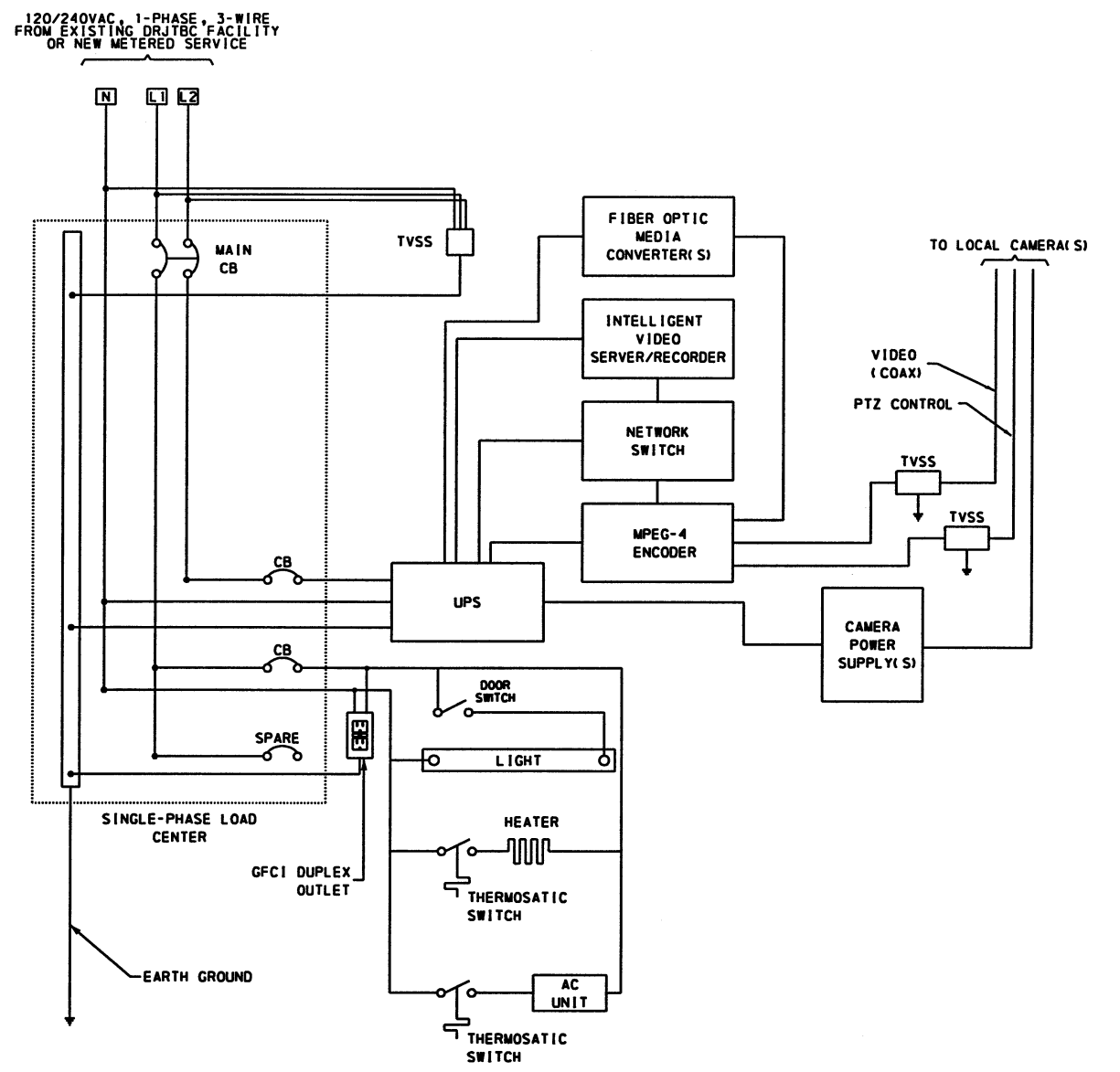
TYPICAL COMMUNICATIONS CABINET



BOTTOM OF CABINET



TOP OF CABINET



COMMUNICATIONS CABINET ELECTRICAL SCHEMATIC

- NOTES:
1. COMMUNICATIONS CABINET SHALL HAVE A NEMA 4X RATING.
 2. CABINET SHALL BE POWERED WITH 120/240 VAC CIRCUIT FROM THE EXISTING GUARD SHACK.
 3. CABINET SHALL BE CAPABLE OF MOUNTING HEATING/AIR CONDITIONING UNITS AND PROVIDE MANUFACTURERS REQUIRED ENVIRONMENTAL CONDITIONS FOR ALL EQUIPMENT INSTALLED WITHIN THE CABINET.
 4. CONDUIT AND ALL CABINET PENETRATIONS WILL BE SEALED ACCORDINGLY AS NOT TO COMPROMISE THE NEMA 4X RATING.

NOT FOR CONSTRUCTION

EXCEPT AS MAY BE OTHERWISE PROVIDED FOR BY CONTRACT, THESE DRAWINGS AND SPECIFICATIONS SHALL REMAIN THE PROPERTY OF THE DRJTBG. BOTH BEING ISSUED IN STRICT CONFIDENCE, THEY SHALL NOT BE REPRODUCED, COPIED, OR USED FOR ANY PURPOSE WITHOUT SPECIFIC WRITTEN PERMISSION.

DESIGNED BY:	B. BARIKIAN	DELAWARE RIVER JOINT TOLL BRIDGE COMMISSION MORRISVILLE, PENNSYLVANIA		
DRAWN BY:	T. WALCK	ESS DESIGN/BUILD/MAINTAIN PROJECT CONTRACT NO. DB-396A		
CHECKED BY:	B. BARIKIAN	CENTRE BRIDGE - STOCKTON TOLL SUPPORTED BRIDGE		
REVISION	DESCRIPTION	DATE	BY	PRELIMINARY DESIGN PLANS COMMUNICATIONS CABINET DETAIL
				SCALE: AS NOTED DATE: 5/12/2006 PAGE: 7 OF 9