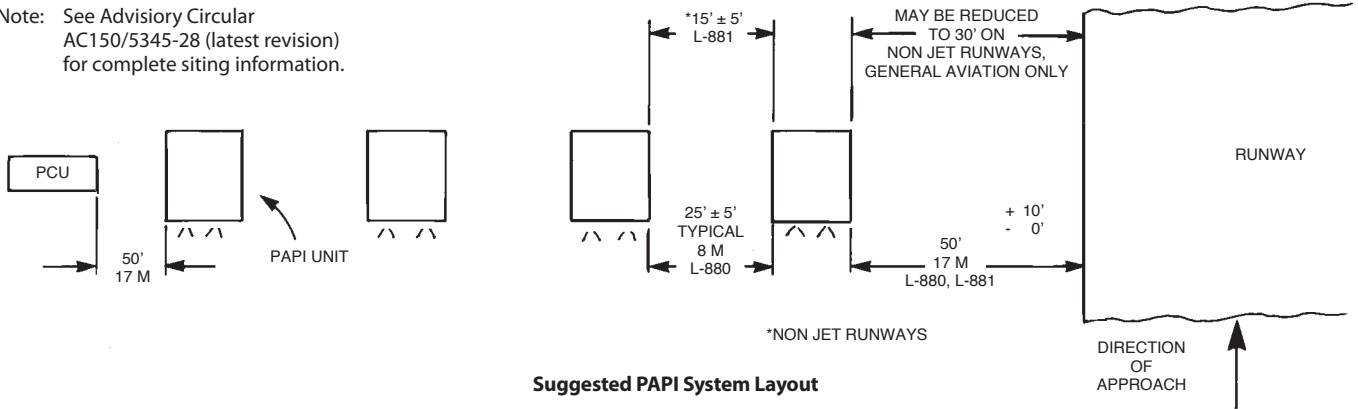




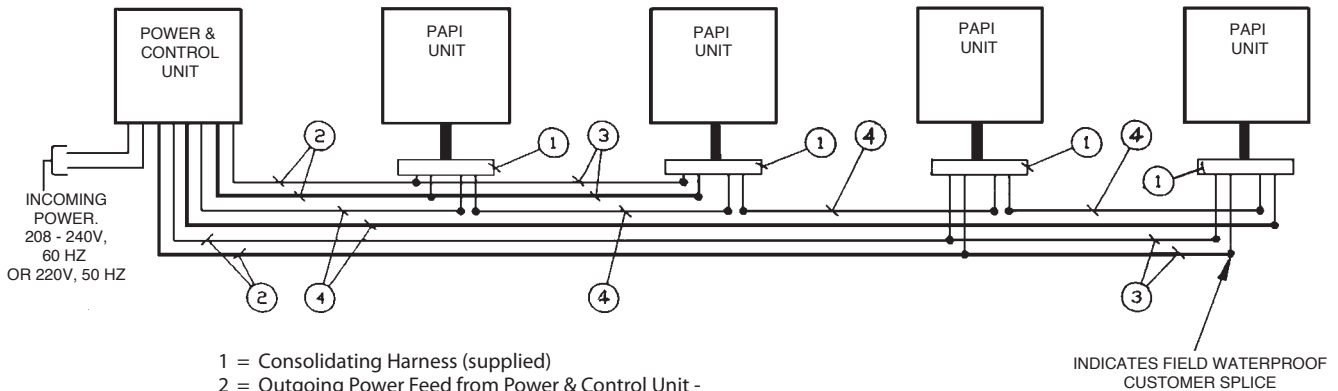
### Installation Information

Note: See Advisory Circular AC150/5345-28 (latest revision) for complete siting information.



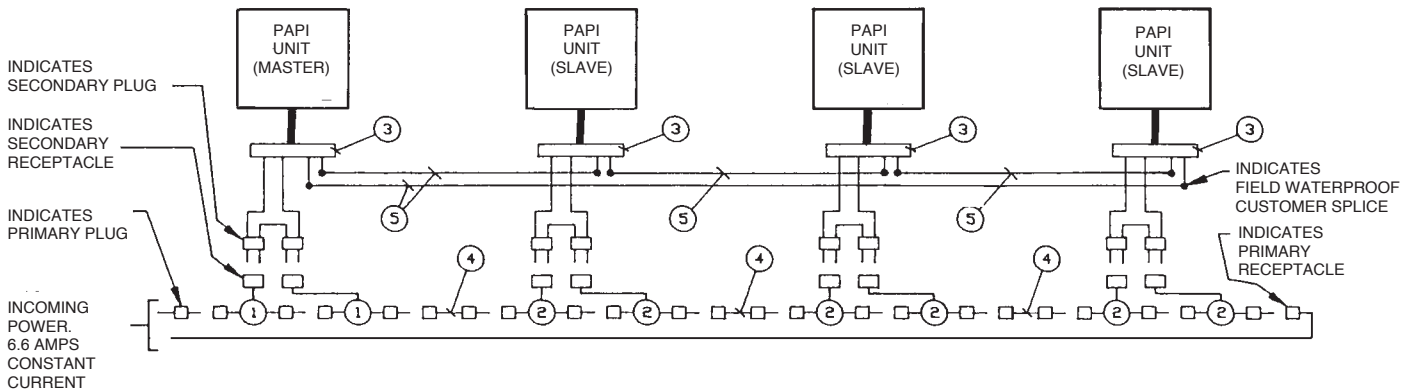
Suggested PAPI System Layout

### Typical Wiring Diagram: FAA Style A



- 1 = Consolidating Harness (supplied)
- 2 = Outgoing Power Feed from Power & Control Unit - #8 AWG min (not supplied)
- 3 = Power Feed from previous PAPI Unit - #14 AWG min (not supplied)
- 4 = Tilt Switch Leads - #14 AWG min (not supplied)

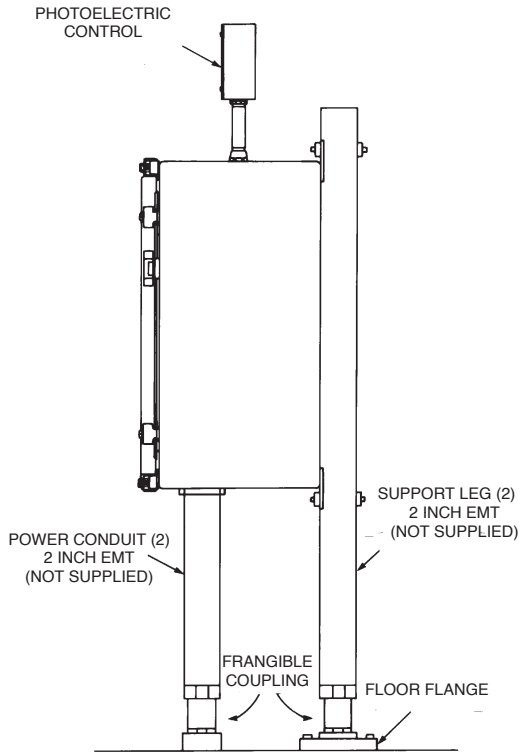
### Typical Wiring Diagram: FAA Style B (2-Lamps)



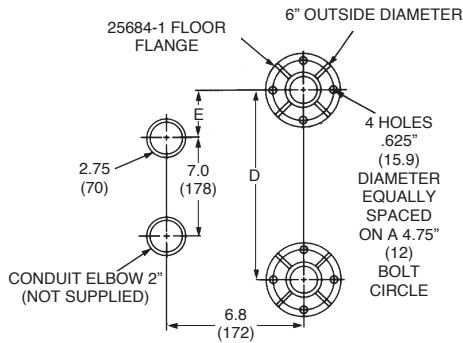
- 1 = 300W, 6.6/6.6A Isolation Transformer 33010 (supplied)
- 2 = 200W, 6.6/6.6A Isolation Transformer 33006 (supplied)
- 3 = Consolidating Harness (supplied)
- 4 = Power Leads with L-823 Connectors - Cable #8 AWG (not supplied) (L-823 Connector Kits supplied)
- 5 = Tilt Switch Leads #14 AWG min (not supplied)

Outline Drawings

**POWER & CONTROL UNIT (PCU)**  
**(Style A System Only)**  
SIDE VIEW



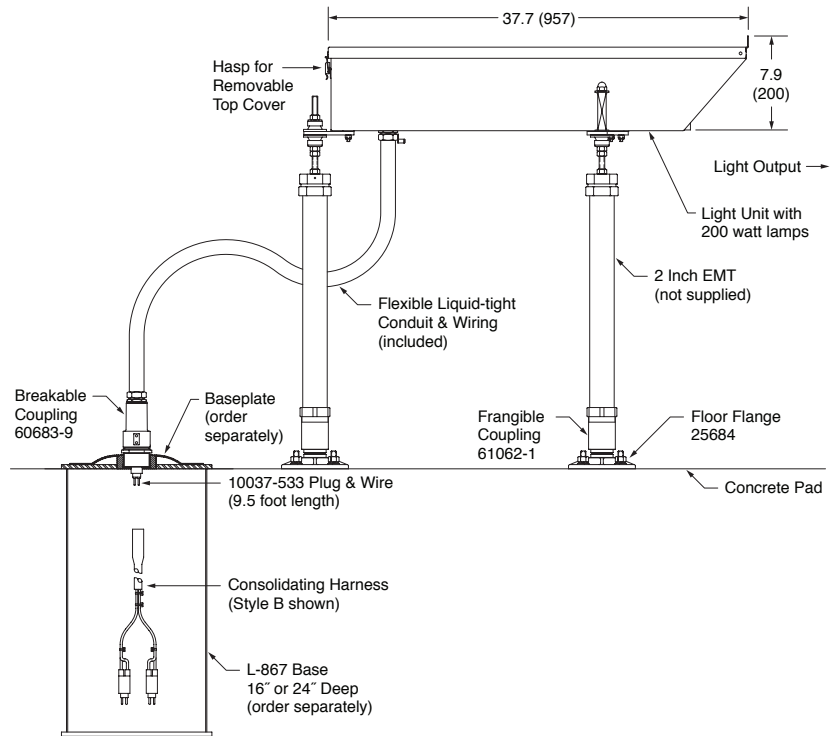
**PCU FOOTING PLAN**



Note: PCU mounting height is not specified. It is recommended to minimize the mounting height. The PCU may be wall mounted.

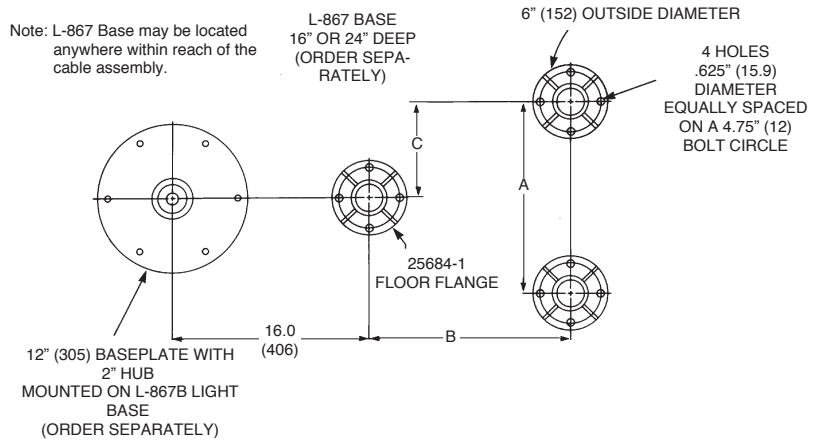
**PAPI Light Unit**

SIDE VIEW



Note: L-867 Base may be located anywhere within reach of the cable assembly.

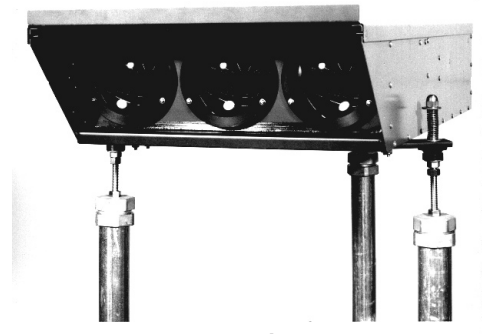
**PAPI UNIT FOOTING PLAN**



**Footing Dimensions Chart**

Inches (Millimeters)	A	B	C	D	E
PAPI Light Unit 2-Lamp	15.75 (400)	25.75 (654)	7.9 (200)	-	-
PAPI Light Unit 3-Lamp	22.50 (572)	25.75 (654)	11.25 (286)	-	-
PCU for 8803A Systems	-	-	-	18.0 (457)	5.5 (140)
All other PCU's	-	-	-	10.0 (254)	1.5 (38)

<b>Dimensions:</b>	inches (mm)		
<b>Instruction Manual</b>	2438 (2-Lamp) 2439 (3-Lamp)		
	<b>Light Unit (2)*</b>	<b>Light Unit (3)*</b>	<b>PCU</b>
<b>Shipping Weight:</b>	75 lbs. 34 kg.	100 lbs. 45 kg.	105 lbs. 48 kg.
<b>Shipping Volume:</b>	9.3 cu.ft. 0.26 cu.m.	12 cu.ft. 0.34 cu.m.	3.7 cu.ft. 0.10 cu.m.
*Each Unit			



3-Lamp Light Unit

### Accessories

Catalog Number	Item Description	Shipping Weight		Shipping Volume	
		lb.	kg.	cu.ft.	cu.m.
1932	Baseplate, 2" Hub	8	3.6	.14	.004
900062-B-24	Base L-867, class II, 24" deep	16	7.3	2.6	.074
900062-B-16	Base L-867, class II, 16" deep	13	5.9	1.8	.051
2124	Base L-867, class I, 24" deep	52	23.6	2.6	.074
25220	Clinometer/Tilt Level				

### Renewal Parts

Part Number	Description	Part Number	Description
<b>PAPI UNIT</b>		<b>PCU</b>	
10047-2896	Lamp 200W	27045	Photocell Assembly
40749	Lamp Socket	27138-1	Power & Control Unit (PCU) PC Board Standard with no Options
27069	Red Filter		Power & Control Unit (PCU) PC Board with Options "12"
31329	Transformer T1	27138-3	Relay K1,K2
60683-9	Breakable Coupling (1 per Unit)	10047-2901	Transformer T1, 900VA
61062-1	Breakable Coupling (3 per Unit)	27039	Transformer T1, 1800VA
25684-1	Floor Flange (3 per Unit)	27038	Transformer T1, 2800VA
10037-533	Plug 4-Pin with 4-Conductor wire 9.5'	27120	Lightning Arrestor
25225-1	Tilt Switch (Class 1)	10047-885	Fuse F1
25225-3	Tilt Switch (Class 2, Style B)	10047-1005	Fuse F2
25225-4	Tilt Switch (Class 2, Style A)	10047-1143	Floor Flange (2 per PCU)
33010	Isolation Transformer 300W (Style B)	25684-1	Frangible Coupling (4 per PCU)
33006	Isolation Transformer 200W (Style A)	61062-1	
33004	Isolation Transformer 100W (Style B)		
27123-1	Tilt Switch Control Board (2-Lamp)		
27123-2	Tilt Switch Control Board (3-Lamp)		
27123-3	Tilt Switch Control Board (3-Lamp)		
10037-534	Consolidating Harness Style A		
27068-1	Consolidating Harness Style B - FAA (2-Lamp)		
27068-2	Consolidating Harness Style B - ICAO		
27068-3	Consolidating Harness Style B - FAA (3-Lamp)		
823KP-D4-D4	Connector Kit L-823, 8 AWG, .32" to .43" O.D.		
		<b>SPARE PAPI UNITS: (Without Harness &amp; Mounting Hardware)*</b>	
		<b>2-Lamp</b>	<b>3-Lamp</b>
		27178-1	27179-1
		27178-2	27179-2
		27178-3	27179-3
		27178-4	27179-4
		27178-5	27179-5
		27178-6	27179-6
		27178-7	27179-7
		27178-8	27179-8
			Style A, Class 1
			Style A, Class 2
			Style B, Class 1 (Master)
			Style B, Class 2 (Master)
			Style B, Class 1 (Slave)
			Style B, Class 2 (Slave)
			Style A, Option 11
			Style B, Option 11

\* For complete 2-Lamp units, order 27170.

\* For complete 3-Lamp units, order 27175.